

4 Janette Court Darley VIC

4 2 4

Another rare opportunity has arrived to secure a beautifully built home in the sought after Grantleigh Estate. Situated on a massive 1,040m² block, this immaculately presented, fully landscaped home, is ready and awaits its new owners. Backing onto the Lerderderg River with your own private gate access onto the Lerderderg Walking Track, very rarely will you come across a property offering such a diverse range of lifestyle opportunities.

This modern style home affords a fantastic layout, greeting you with a two double garages for practicality. Make your way down the front stairs through the stunning entry way, offering 4 bedrooms all but one with BIRs, Master suite with WIR, large ensuite and panoramic views from your own bedroom window of the Lerderderg George and central bathroom fitted with a deep luxurious bathtub perfect for

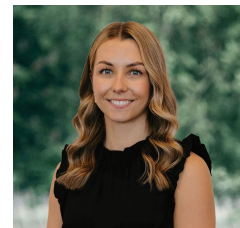
Price : \$ 923,000

Land Size : 1040 sqm

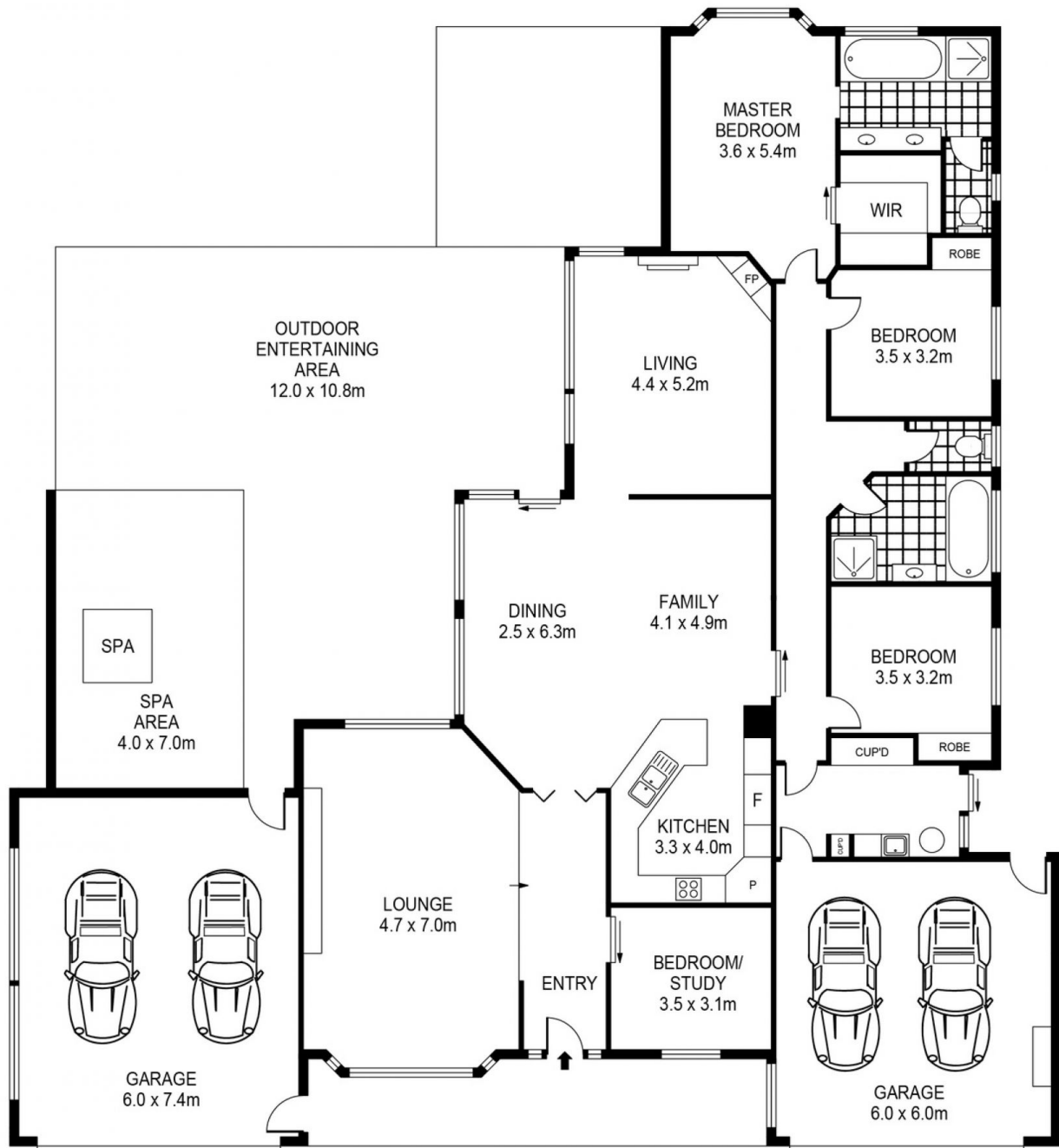
View : <https://www.bacchusmarshrealestate.com.au/sale/vic/west/darley/residential/house/7798182>



Steve Creese
03 5367 2333



Charlee MacPherson
03 5367 2333



0 1 2 3 4 5
 SCALE (METRES)

PLANS SHOWN ONLY INDICATIVE OF LAYOUT. DIMENSIONS ARE APPROXIMATE.

4 JANETTE COURT

DARLEY
 Real Estate