



24 Tilley Drive Maddingley VIC

3 2 2

Presenting this 3-bedroom home located in the sought-after Hillview Estate situated on a block of approx. 593m². With low maintenance front and back gardens, this home would be a great way to get your foot into this busy market. Currently tenanted until August 2024, paying \$440 per week.

Price : \$ 530,000

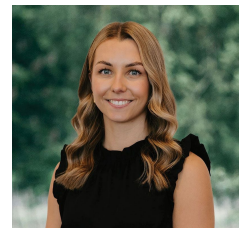
Land Size : 593 sqm

View : <https://www.bacchusmarshrealestate.com.au/sale/vic/west/maddingley/residential/house/7798187>

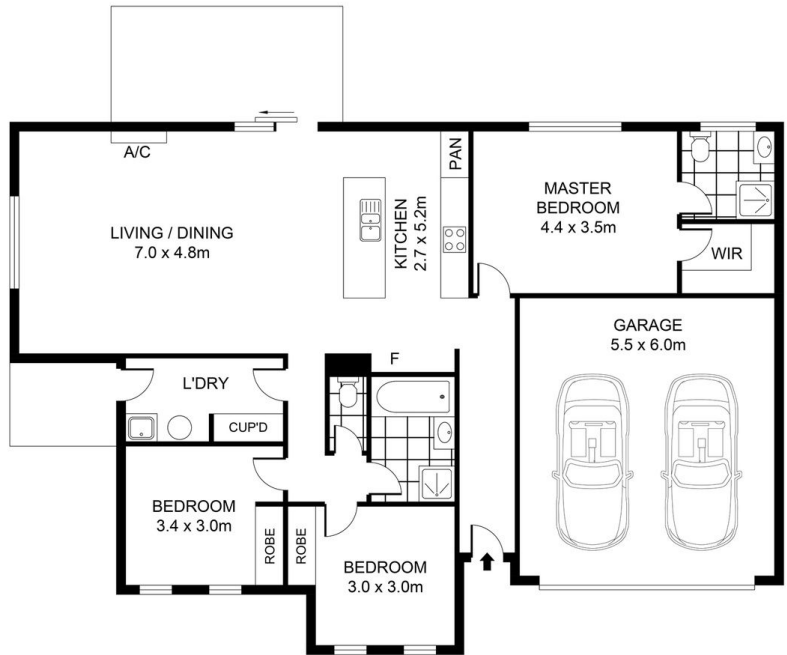
Consisting of 3 bedrooms all with BIR serviced by a central bathroom for convenience. Master bedroom towards the rear of the home with WIR and ensuite. Open plan living, dining and kitchen with ample bench space for maximum preparing space, equipped with a dishwasher, built in 600ml oven and gas cooktop. Ducted heating and split system cooling throughout. Laundry with convenient access through to clothesline outside. This property also features a secure, double car garage.



Steve Creese
03 5367 2333



Charlee MacPherson
03 5367 2333



0 1 2 3 4 5 **SCALE (METRES)**

PLANS SHOWN ONLY INDICATIVE OF LAYOUT. DIMENSIONS ARE APPROXIMATE.

24 TILLEY DRIVE

INT : 116m² (approx)
 GARAGE : 33m² (approx)

Real Estate **MADDINGLEY**