

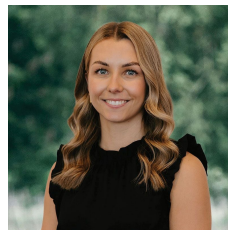
### 3 Lilly Pilly Court Darley VIC

4 2 2

Nestled in a quiet court location in Darley, conveniently located close to Kindergartens, Primary Schools, Darley Civic Hub, IGA Supermarket, Service Station, Medical Centre, Chemist, 1,000 steps, walking tracks and so much more.

This stunning 4-bedroom home, built in 2020 with a large family in mind. The light filled flexible floor plan was designed to maximise space and comfort. Showcasing quality fittings throughout, with no expense spared. Featuring all the modern comforts which includes, high ceilings, double glazed window, LED down lights, refrigerated heating and cooling throughout, fitted out laundry, luxurious central bathroom with floor to ceiling tiles and bath, three spacious living areas consisting of large open plan living, a separate lounge/theatre room, and

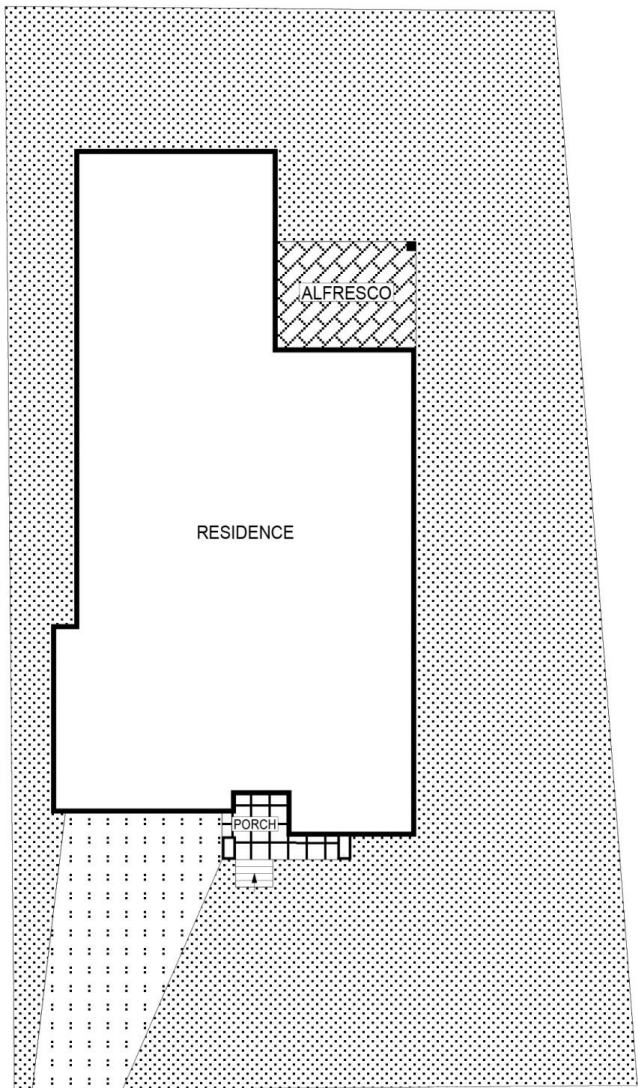
**Price** : \$ 800,000  
**Land Size** : 747 sqm  
**View** : <https://www.bacchusmarshrealestate.com.au/sale/vic/west/darley/residential/house/7816954>



**Charlee MacPherson**  
03 5367 2333



**Steve Creese**  
03 5367 2333



**SITE PLAN**  
(NOT TO SCALE)



**SCALE (METRES)**

PLANS SHOWN ONLY INDICATIVE OF LAYOUT. DIMENSIONS ARE APPROXIMATE.



**3 LILLY PILLY COURT**

**DARLEY**