



**70 Gisborne Road Bacchus Marsh VIC**

5 1 4

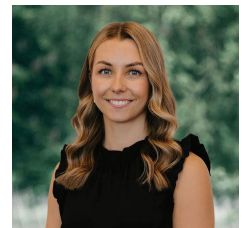
This brick veneer residence is situated on a substantial block, spanning approximately 1142m<sup>2</sup>. Nestled in a highly sought-after central part of town, it provides unparalleled convenience with proximity to freeway access, childcare and kindergarten facilities, not one, but two primary schools, local medical services, and the bustling town centre.

The property's strategic location caters to the diverse needs of residents, offering seamless access to essential amenities. For families with school-going children, the vicinity boasts easy reach to both Bacchus Marsh Secondary College and Bacchus Marsh Grammar, ensuring quality education is just minutes away by car, bike, or foot.

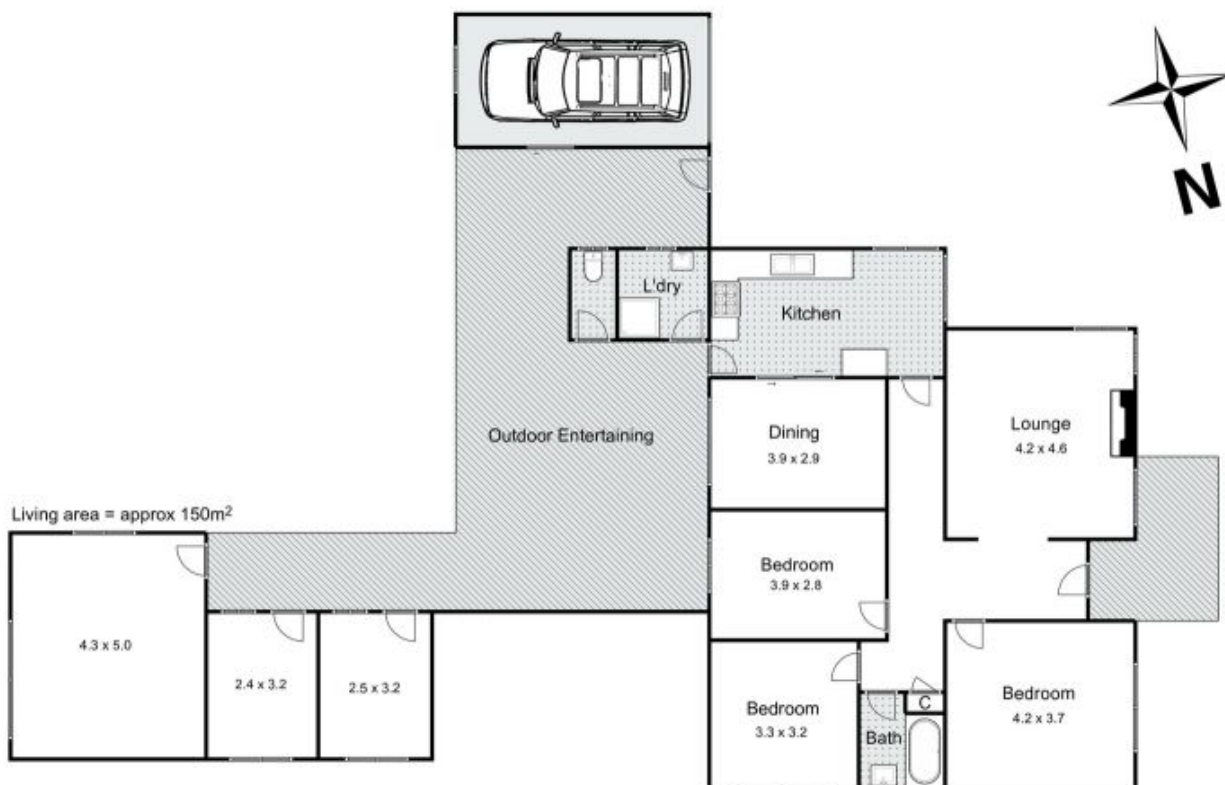
**Price** : \$ 700,000  
**Land Size** : 1142 sqm  
**View** : <https://www.bacchusmarshrealestate.com.au/sale/vic/west/bacchus-marsh/residential/house/7892174>



**Steve Creese**  
03 5367 2333



**Charlee MacPherson**  
03 5367 2333



## 70 Gisborne Road, Bacchus Marsh

Whilst every attempt has been made to ensure the accuracy of the floor plan contained here, measurements of doors, windows, rooms and any other items are approximate and no responsibility is taken for any error, omission, or mis-statement. This plan is for illustrative purposes only and should be used as such by any prospective purchaser. The services, systems and appliances shown have not been tested and no guarantee as to their operability or efficiency can be given.