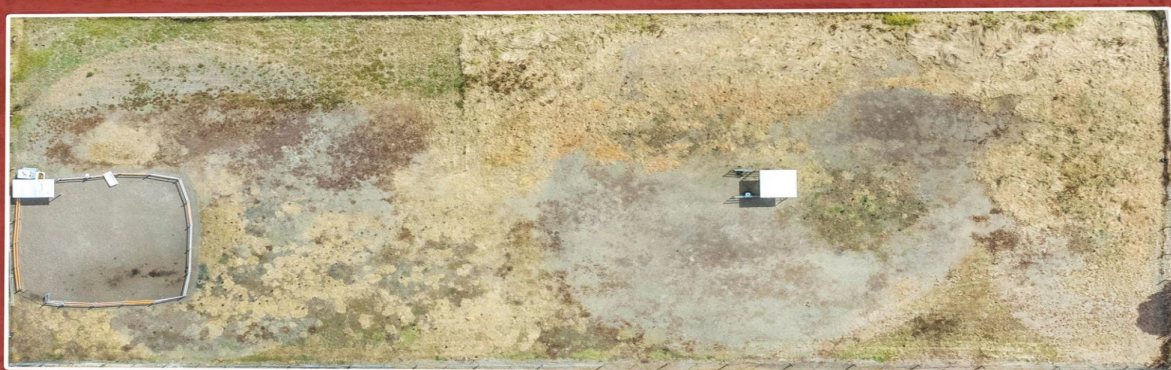




100m approx



40m approx



10&11/ Hardy Street Myrning VIC

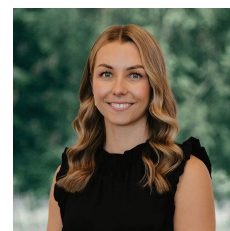
A unique opportunity to purchase approximately 4040sqm (1 acre) of land, right in the heart of Myrning. Situated across from Myrning Primary School, 50mtrs from the Myrning Recreational Reserve, and under 150mtrs to The Plough Hotel, this would be the perfect place to build your dream home (STCA). Myrning has easy freeway access to Melbourne or Ballarat and is around a 10 minute drive to Ballan or Bacchus Marsh.

Contact us today for more information.

Type : Land
Price : \$ 505,000
Land Size : 4040 sqm
View : <https://www.bacchusmarshrealestate.com.au/sale/vic/west/myrning/residential/land/7983048>



Steve Creese
03 5367 2333



Charlee MacPherson
03 5367 2333