



133B Gisborne Road Darley VIC

3 2 1

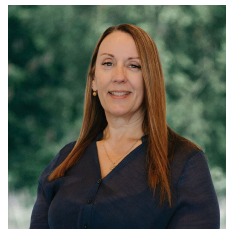
This stylish double storey townhouse is located in the heart of Darley. It offers a unique floor plan, meticulously designed with modern fixtures and high-quality finishings.

- Main bedroom with balcony, walk-in-wardrobe and ensuite with double basins
- Other 2 bedrooms with built-in-wardrobes
- Second lounge/rumpus area upstairs
- Downstairs study
- Powder room
- Open plan kitchen/meals/living area with modern appliances
- Split systems in main living area and in all 3 bedrooms
- Low-maintenance backyard with garden shed
- Single car garage with remote and internal access

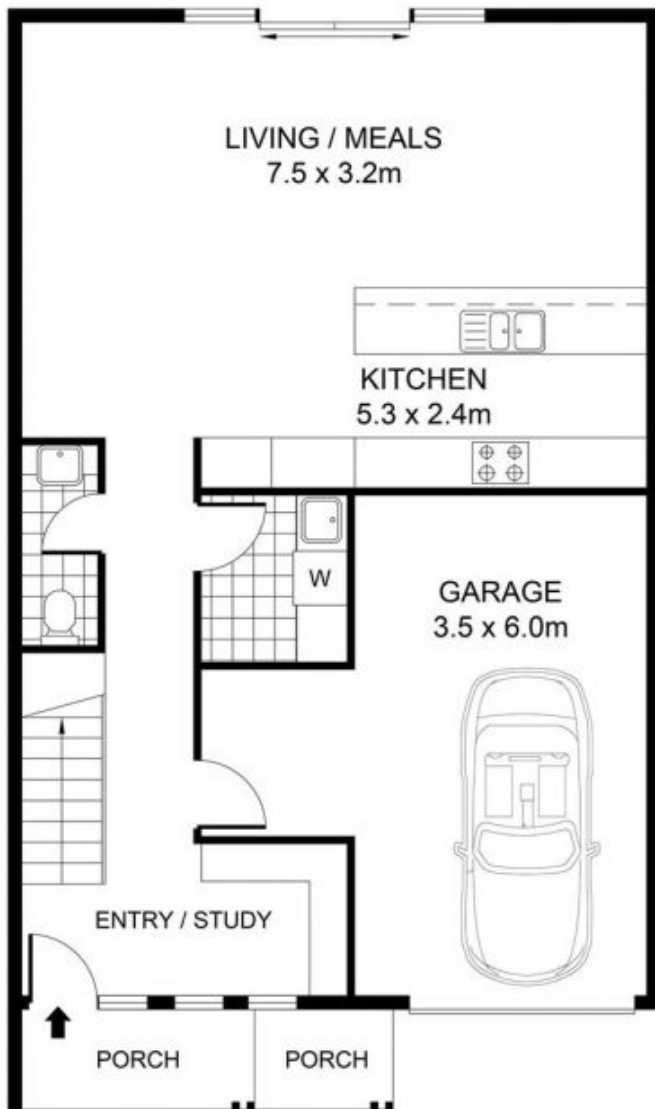
[For full version visit the website](#)

Type : Townhouse

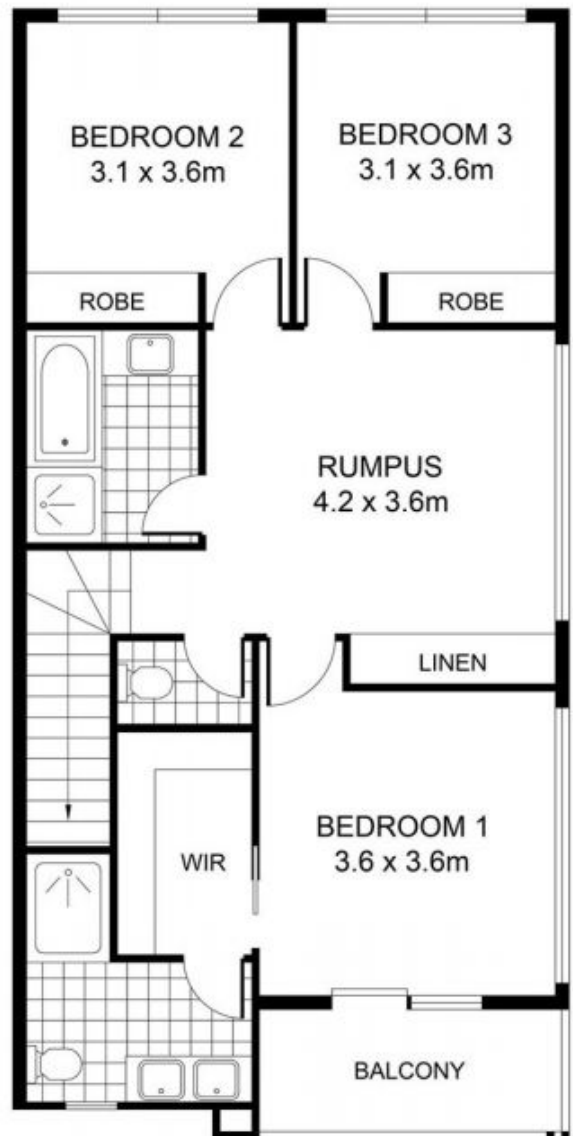
View : <https://www.bacchusmarshrealestate.com.au/lease/vic/west/darley/residential/townhouse/8492057>



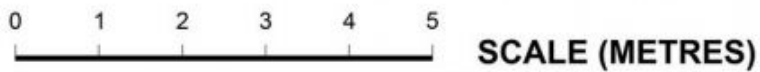
Sandra Coric
03 5367 2333



GROUND FLOOR



FIRST FLOOR



PLANS SHOWN ONLY INDICATIVE OF LAYOUT. DIMENSIONS ARE APPROXIMATE.



INT : 151m² (approx)
EXT : 11m² (approx)
GARAGE : 26m² (approx)