



2 Mitchell Court Darley VIC

3 2 3

Positioned on a generous 809m² (approx.) allotment and just moments from local schools, this solid 3-bedroom, 2-bathroom brick home offers fantastic potential for buyers looking to add the final finishing touches to this partially renovated property and make it their own.

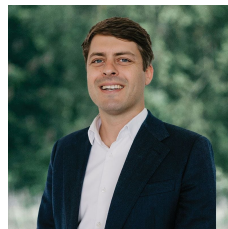
Inside, the home has already received some impressive updates, including new flooring throughout, an updated kitchen, refreshed laundry, modernised bedrooms, and a light-filled lounge area with imitation fireplace. The master bedroom features a walk-in robe space and an ensuite with allowance for a toilet, shower, and vanity - fully tiled and ready for you to complete to your style. The remaining bedrooms are fitted with built-in robes and are serviced by

[For full version visit the website](#)

Type : House

Price : \$ 590,000

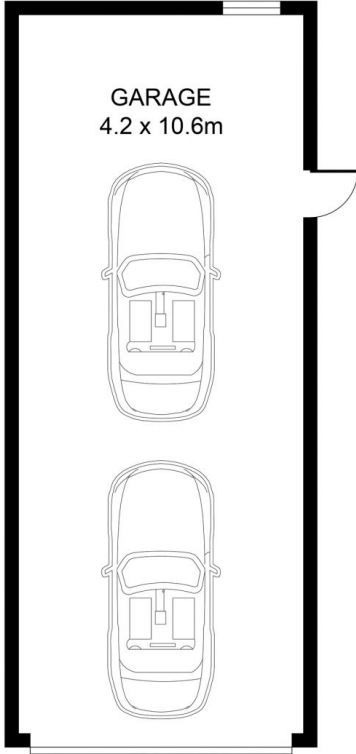
View : <https://www.bacchusmarshrealestate.com.au/sale/vic/west/darley/residential/house/8516237>



Dominic Morrison
5331 2233



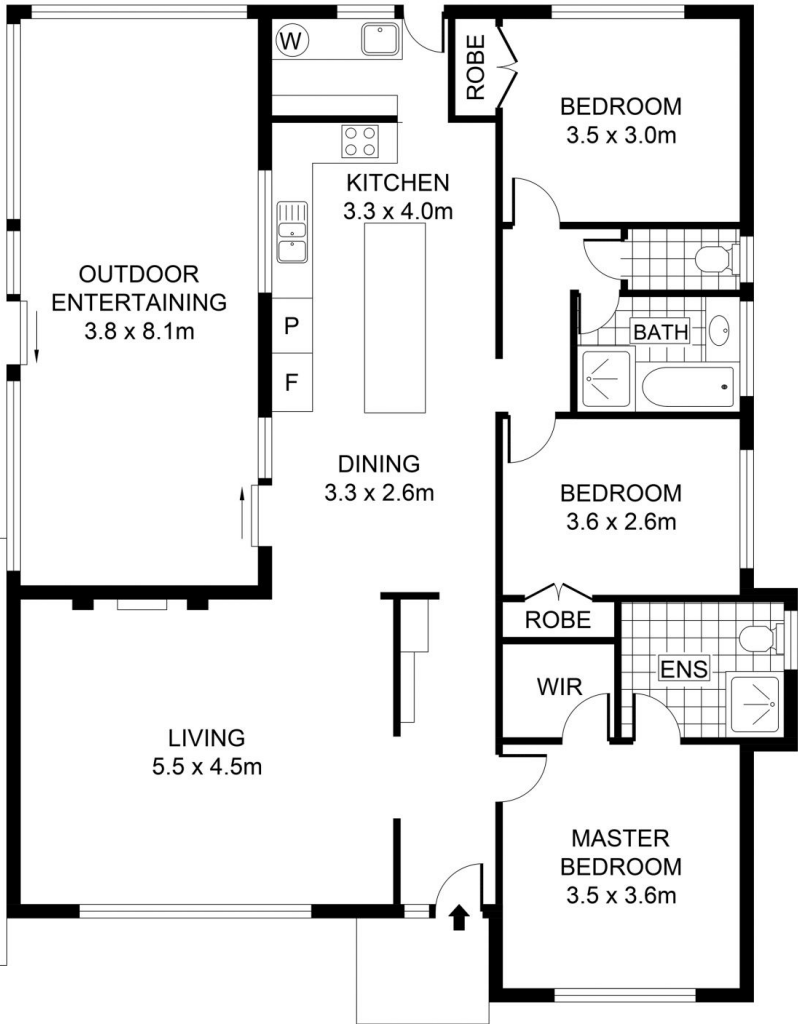
Liam Baker
03 5367 2333



GARAGE
4.2 x 10.6m



CARPORT
6.2 x 6.3m



OUTDOOR ENTERTAINING
3.8 x 8.1m

KITCHEN
3.3 x 4.0m

DINING
3.3 x 2.6m

LIVING
5.5 x 4.5m

BEDROOM
3.5 x 3.0m

BEDROOM
3.6 x 2.6m

MASTER BEDROOM
3.5 x 3.6m

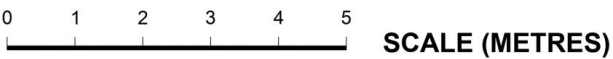
BATH

ENS

ROBE

ROBE

WIR



SCALE (METRES)

PLANS SHOWN ONLY INDICATIVE OF LAYOUT. DIMENSIONS ARE APPROXIMATE.

INT : 112m² (approx)
EXT : 79m² (approx)
GARAGE : 44m² (approx)

2 MITCHELL CT

DARLEY